



Ian Gallagher
President

Cory Knill
President-Elect

Alan Mayville
Treasurer

Karen Snyder
Secretary

Michael Huberts
Representative

Josh Kim
Treasurer-Elect

Justine Cunningham
Secretary-Elect

Michael Huberts
Webmaster

2025 GLC-AAPM Spring Meeting

Thursday, April 10th, 9:00 am – 6:00 pm EST

Kalman Auditorium, Corewell Health Dearborn Hospital

18101 Oakwood, Dearborn, MI 48124

We invite all GLC members to join us for our 2025 Spring Meeting with a workshop on operations management and process management tools for the clinic. The Spring Meeting will also include our annual MedPhys Slam competition and Young Investigators Symposium.



We have applied for 7 MPCEC to be available to certified members who complete the onsite survey.

Gold Sponsors



Silver Sponsors



Bronze Sponsors





Ian Gallagher
President

Cory Knill
President-Elect

Alan Mayville
Treasurer

Karen Snyder
Secretary

Michael Huberts
Representative

Josh Kim
Treasurer-Elect

Justine Cunningham
Secretary-Elect

Michael Huberts
Webmaster

2025 GLC-AAPM Spring Meeting

Thursday, April 10th, 9:00 am – 6:00 pm EST

Kalman Auditorium, Corewell Health Dearborn Hospital
18101 Oakwood, Dearborn, MI 48124

9:00am	Registration	
9:30am	Opening Remarks	Cory Knill GLC-AAPM President-Elect
9:45am	MedPhys Slam	Cory Knill GLC-AAPM President-Elect
10:30am	Operations Management and Process Management Tools for Your Clinic – Part 1*	Colleen Fox Dartmouth Health & Jennifer Willyard Dartmouth Health
1:00pm	Lunch	
1:45pm	Operations Management and Process Management Tools for Your Clinic – Part 2*	Colleen Fox Dartmouth Health & Jennifer Willyard Dartmouth Health
4:15pm	Gold Sponsor Presentations	
4:30pm	Young Investigator Presentation	Ian Gallagher GLC-AAPM President
5:45pm	Closing Remarks	Ian Gallagher GLC-AAPM President

**Learning Objectives:*

1. Be able to apply at least three operations management terms to workflow in your clinic / life
2. Gain exposure to process mapping for process improvement.
3. Understand the basics of DMAIC (Define, Measure, Analyze Improve, Control) and PDSA (Plan, Do, Check, Act)
4. Become acquainted with tools and techniques related to change implementation

We have applied for 7 MPCEC to be available to certified members who complete the onsite survey.

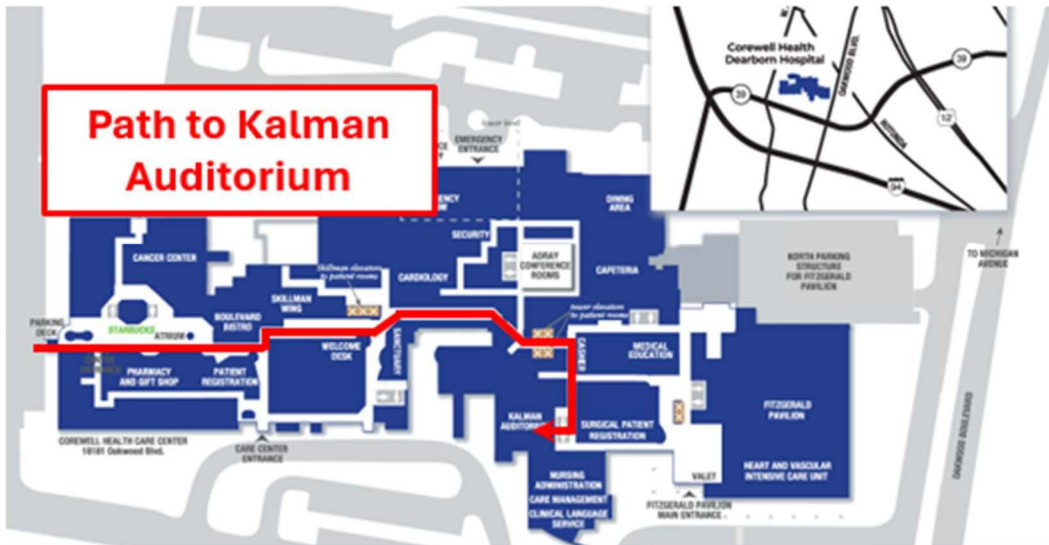


Great Lakes Chapter

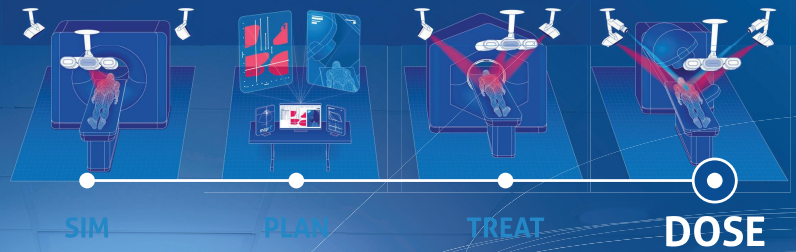
AMERICAN ASSOCIATION of PHYSICISTS IN MEDICINE

Corewell Health Dearborn Hospital

18101 Oakwood Blvd., Dearborn, MI 48124
313.593.7000



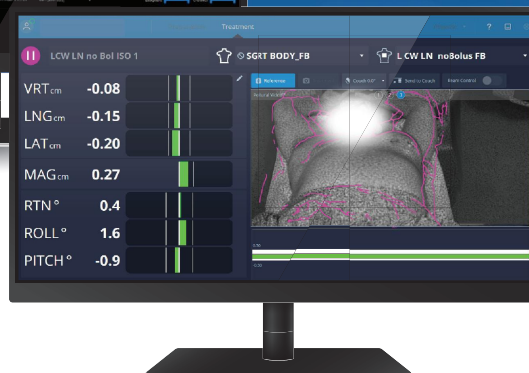
Surface Guidance now at **EVERY** step



dosert™
Powered by BeamSite®

See the Dose
& Monitor Patient
Position in Real Time

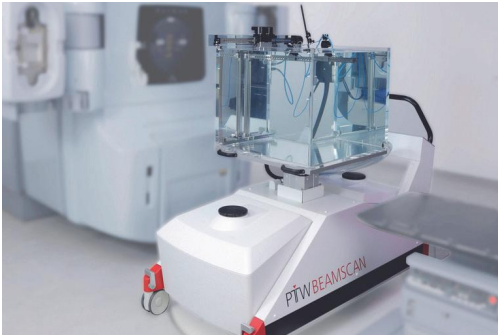
Another world-first
from Vision RT



SEE MORE >>>
visionrt.com/dosert

visionrt
Guiding Radiation Therapy™

DoseRT is a trademark of Vision RT.
BeamSite is a trademark of DoseOptics LLC.
©2025 Vision RT Ltd. All rights reserved.
0008-0055 - DoseRT Ad Issue1.0



BEAMSCAN

The Ideal Water Phantom for Every Linac and Every User



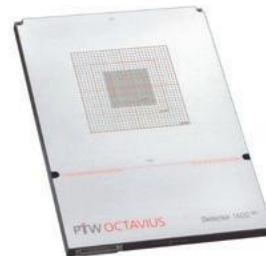
RUBY Phantom

Comprehensive QA testing for the entire treatment chain



UNIDOS Romeo & Tango

The New Generation of Reference Class Electrometers



OCTAVIUS 1600 SRS

Detector array for patient plan verification and quality control of SRS applications

Elekta ONE® | Planning

Powered by MIM

Exclusive features, stronger than the sum of solutions

Elekta ONE | Planning*—an enterprise solution integrating the most advanced treatment planning components into a unified solution, delivering unparalleled capabilities and benefits that redefine the standard of excellence in radiation oncology.



Product

Superior end-to-end speed and premium user experience with AI and workflow automations powered by MIM.



Service

Higher standard of care including full support and technology refresh.**



Implementation

One solution, one software management. Higher efficiency and projection in the mid/long run.



Product

Unleashing unmatched capabilities

A solution that converges the best of treatment planning components into one

Superior speed

- 18x faster plan computation on average***
- 180 seconds full Monte Carlo Dose optimization and calculation****

Premium user experience

- Consistent offline and online workflows
- Exclusive dashboards for contextual planning, by using the right tool at the right time

Distributed planning

- Enterprise solution to support concurrent planning
- Maximize the potential of your existing hardware

Versatility

- One solution for all
- Supports all C-arm linacs as well as IBA proton therapy delivery devices
- Higher integration with Varian linacs

Enhanced automation and optimized workflow

- Co-development partnership with MIM for distinctive integration, superior speed, and premium user experience
- Rigid and deformable image registration, automatic processing and data transfer
- Zero-click AI contouring

Elekta advantage

- Enhanced efficiency and accuracy with Elekta devices, enabled by IntelliBeam
- Integration with Elekta ONE OIS powered by MOSAIQ

